



#### DESCRIPTION

Square and Rectangle New England Veneer Stone features precise cut squares and rectangles with a facing area per piece of between .5 and 1.5 square feet. The weight, varied coloration, and authentic feel of this stone veneer is truly remarkable. Packed in crates, half crates, and boxes as individual flat stones. Matching 90° corners are available. Installation options for all other angles are weaving or miter cutting on site.

#### DIMENSIONS

Facing Area: ½ to 1½ square feet  
Size Range: 6" to 24" wide x 3" to 12" high  
Thickness: 1¼ to 1½ inches

#### TECHNICAL INFORMATION

Installed weight: 15 lbs per square foot or less  
Strength: Break strength is in excess of 7000 psi - the strongest in the industry. Higher stone strength equates to less breakage in shipping and less waste.

#### DELIVERY

Veneer is available in both flats and corners in all styles. Flat veneer is sold by the square foot and is available in boxes or crates. Corners are sold by the linear foot in boxes, half crates, or full crates. New England Veneer Stone is shipped to authorized resellers throughout the USA.

#### FLAT VENEER COVERAGE CORNER COVERAGE

Crate: 160 ft <sup>2</sup>	Crate: 150 lf	½ Crate: 75 lf
Box: 5 ft <sup>2</sup>	Box: 5 lf	

#### INSTALLATION

New England Veneer Stone is made with real stone aggregates and can be installed using traditional masonry methods. Installation time is greatly reduced due to less breakage in shipping and consistent quality, stone after stone. If needed, the veneer may be cut and chiseled just as you would a quarry cut stone. The cut edge will reveal natural stone throughout and will appear lighter than the veneer face - just as a natural cut stone would appear lighter on a surface that has not been weather-aged.

#### APPLICATION

New England Veneer Stone has been subjected to extensive freeze-thaw tests and can withstand harsh climates. May be used for exterior and interior applications. It is suitable for use below grade and is UV, mold, and salt resistant. The veneer can be professionally cleaned using a gentle acid wash of 6% muriatic acid and water solution or it can be pressure washed (at pressures not to exceed 1000 psi).\*

*\*Not following these recommendations will void the warranty.*

### A GREENER STONE

**Q** What is more environmental friendly than quarried cut stone?

**A** New England Veneer Stone.

Tons of crushed stone waste is created in the production of natural stone veneer. Our time-tested methods utilize this crushed stone - along with recycled glass, iron oxides, and other natural colorants - and bind it into natural stone moldings, trims, and veneers with rich color that permeates the entire piece beyond the surface. It is an exacting process that yields beautiful results time after time. A stronger veneer with a positive impact on the environment? What could be better?

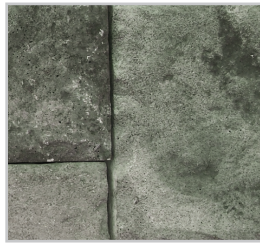
## NEW ENGLAND *Veneer Stone*®



TRADITIONAL TAN



QUARTZITE GRAY



QUARTZITE GREEN



QUARTZITE GOLD



BLUESTONE



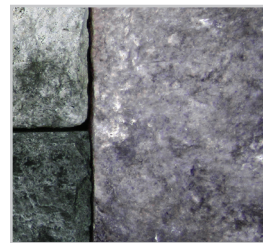
WARM GRANITE  
BLEND



COOL GRANITE  
BLEND



NEW ENGLAND  
BLEND



ORCHARD BLEND

### SAMPLES

The best way to experience the authentic nature of our stone veneers is to see them for yourself. **Please contact Cornerstone Architectural Products for a free sample board. Call 800-440-4119.**

### COLORS

While no two New England Veneer Stones will ever be 100% alike in color, we do guarantee a consistent range. So when we say you'll receive peaches and pinks in our warm granite blend, or purples and greens in the orchard blend - that's a promise\*.

### DESIGNED TO BE BEAUTIFUL. ENGINEERED TO BE SMART.

Cornerstone Architectural Products' goal was to engineer a stone veneer that would be second to none in both artistry and integrity. We succeeded. During the designing of New England Veneer Stone®, our design team worked closely with scientists from Poraver®, an international manufacturer of post-consumer recycled glass. We utilized their lightweight aggregate in our mix formula to improve strength, thermal efficiency, acoustic performance, and freeze-thaw resistance - all while keeping our manufacturing process environmentally friendly.

A finish sealer is applied to the veneer to further enhance the durability of the stone by helping prevent efflorescence and making it resistant to mold, salt and UV rays.

These proprietary techniques enable us to provide a thicker, stronger veneer that adheres to the ASTM standards C1364 for architectural cast stone and C1670 for architectural thin stone veneer.

### TRADITIONAL TAN

Tan earth tones, including browns, beiges, blacks, and light grays with gold and mica accent specks.

### QUARTZITE GREEN

Greens with gray and subtle white accents.

### QUARTZITE GRAY

Dark grays with subtle white and tan accents.

### QUARTZITE GOLD

Gold and mustard colors with browns and beiges with mica accent specks.

### BLUESTONE

Slate blue and dark grays with tan and gold accents.

### WARM GRANITE BLEND

Peaches and pinks with light and dark grays with accents of white.

### COOL GRANITE BLEND

Browns, light and dark grays with white and tan accents.

### NEW ENGLAND BLEND

Light and dark grays, blacks, tans with occasional greens, pinks, peaches.

### ORCHARD BLEND

Purples and greens with light and dark grays and blues.